



1

Jaw^ˇ sa^ˇ do^ˆ ni yah^ˇ-aw^ˇ deh^ˆ-eu

Tho-e^ˇ lon^ˆ to^ˆ ko-e^ˇ





1

Jaw^ˇ sa^ˇ do^ˆ ni yah^ˇ-aw^ˇ deh_ˆ-eu

Tho-e^ˇ lon_ˆ to^ˆ ko-e^ˇ Dengue

Translated to the Akha language by: Ado, Carmella, Rebecca

Date: June 29, 2012

Test Edition, 100 copies

Text and artwork used by permission from International Cooperation Cambodia. Originally written by the Health Editors Group in Ratanakiri province

A_ˆkha_ˆ daw_ˆ yu^ˇ do^ˆ-eu_ˆ gha_ˆ : A^ˇdo_ˆ, Mi^ˆe^ˇ, Le_ˆbeh^ˇka_ˆ

A^ˇ nah : Ju_ˆ 29, 2012

Ya_ˆ beh beh-eu_ˆ po^ˆ, 100 dm_ˆ

Ga^ˇ kaw^ˆ haw^ˇ-eu_ˆ a^ˇ ba^ˇ zm_ˆ-eu_ˆ gha^ˇ du_ˆ International Cooperation Cambodia neh a_ˆ khaw-a_ˆ bi_ˆ la_ˆ-eu_ˆ meh. Pha^ˇ dm_ˆ heu dm_ˆ bo_ˆ dah_ˆ beh-eu_ˆ-a_ˆ, the Health Editors Group in Ratanakiri province neh meh.

Tho-e^ˇ lon, to[^] ko-e^ˇ



Tho-e^ˇ lon_ˇ to[^] ko-e^ˇ na^ˇ gaw^ˇ
a_ˇ jo[^]-eh^ˇ pyeu_ˆ la^ˇ hta



Tho-e^ˇ lon_ˇ to[^] ko-e^ˇ na^ˇ gaw^ˇ-a_ˇ, a_ˇ dui-eu_ˇ
nym^ˇ htah_ˇ gho_ˆ htah_ˇ jaw^ˇ jaw^ˇ-eu cha^ˇ gaw_ˇ
hti_ˇ je_ˇ-ah^ˇ neh tsaw^ˇ ha_ˇ-ah^ˇ nyaw_ˇ la^ˇ-eu na^ˇ
gaw^ˇ meh. Cha^ˇ gaw_ˇ qhoe^ˇ je_ˇ-a_ˇ nah ghah^ˇ
phaw teh_ˆ-eh^ˇ tsaw^ˇ ha_ˇ-ah^ˇ kaw_ˆ la^ˇ-eu meh.

Tho-e^ˇ lon_v to[^] ko-e^ˇ na^ˇ gaw^ˇ a_v jo[^]-eh^ˇ gheh hta

1. Phya_v-eu



2. U_v du_v kaw_^ dui dui-eu.

Mya[^] nui[^] mya[^] qhah^ˇ,

hkui^ˇ du la_^ du, yoe_v

tcui_^ yoe_v la_^ gaw^ˇ-eu.

U_v peh_^ peh_^ yoe^ˇ-eu.

U_v peh_^ peh_^-eu.



3. Hti_v po[^] na, ma^ˇ toe[^]

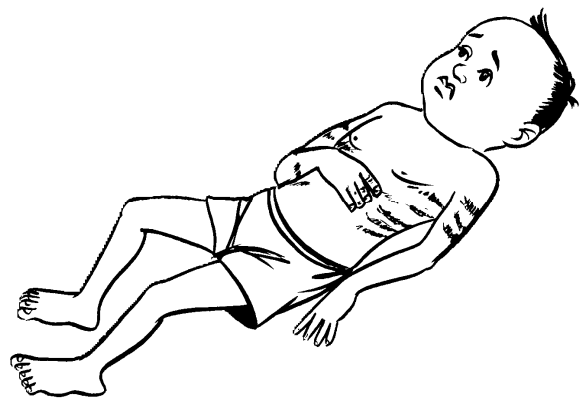
yaw ne^ˇ ne^ˇ leh^ˇ toe[^]

la^ˇ-eu. Ma^ˇ toe[^] toe[^]-

eu lo_^-eh^ˇ sha_v ji^ˇ yaw

htu_v yaw hta_v-eh^ˇ

pyeu_^ la^ˇ-eu.



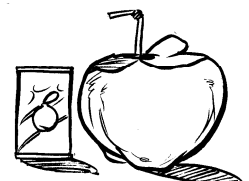
Tho-e^ˇ lon_ˇ to[^] ko-e^ˇ-ah^ˇ i^ˇ khah^ˇ la_^ qhoe^ˇ a_ˇ jo[^]-eh^ˇ la[^] sa[^] nm^ˇ



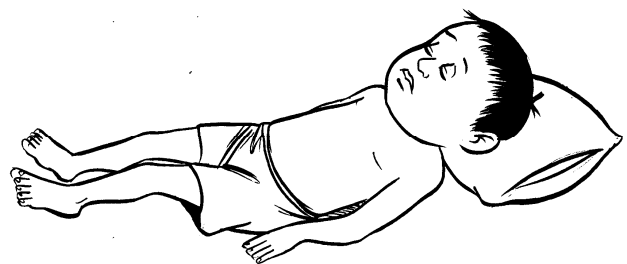
1. Phya_ˇ lu_^ ngeh pa_ˇ la_ˇ si_ˇ ta_ˇ maw^ˇ
bi daw^ˇ-aw_ˇ. (Eh_ˇ si_ˇ pin_ˇ (aspirin)
bi daw^ˇ na^ˇ shi_ˇ bi do[^] dzeh_ˇ la^ˇ
ni gha_ˇ bi_^ ga^ˇ du^ˇ-eu mi^ˇ neh,
hta_ˇ bi daw^ˇ.)



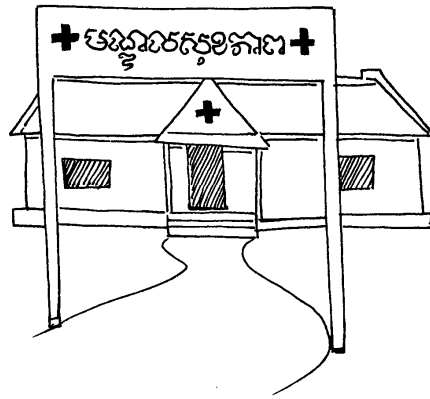
2. I^ˇ cu_^ yaw shaw^ˇ haw^ˇ-eu
dza^ˇ ui^ˇ nui je_ˇ yaw mya_ˇ
mya_ˇ-eh^ˇ bi daw^ˇ-aw_ˇ. Khu_ˇ
byah_ˇ gui na^ˇ, i^ˇ cu_^ hti_ˇ
qheh_ˇ ma_ˇ hta_ˇ ni bi daw^ˇ-
aw_ˇ.



3. Gha_ˇ na_ˇ yaw mui_ˇ-
eh^ˇ bi na_ˇ dah-aw_ˇ.



A_v jo^ˇ-eh^ˇ gheh la^ˇ ngeh jaw^ˇ
se^ˇ yo_v-ah^ˇ ya i^ˇ hta



La_^ o[^] phaw eh^ˇ hta_v-eu_v lo_^-eh^ˇ za_v-ah^ˇ pyeu_^
la^ˇ na^ˇ, la_^ qhoe^ˇ phaw shi_v do[^]-eu tho-e^ˇ lon_v to[^]
ko-e^ˇ pyeu_^ lu_^-eu baw le. Se^ˇ yo_v-ah^ˇ yaw khaw^ˇ-
eh^ˇ eu_v gheh yaw_v.

1. Shi_v ma_v chah mui_v-eu

Shi_v ma_v chah mui_v nga leh^ˇ si_v
la^ˇ-eu-a_v:

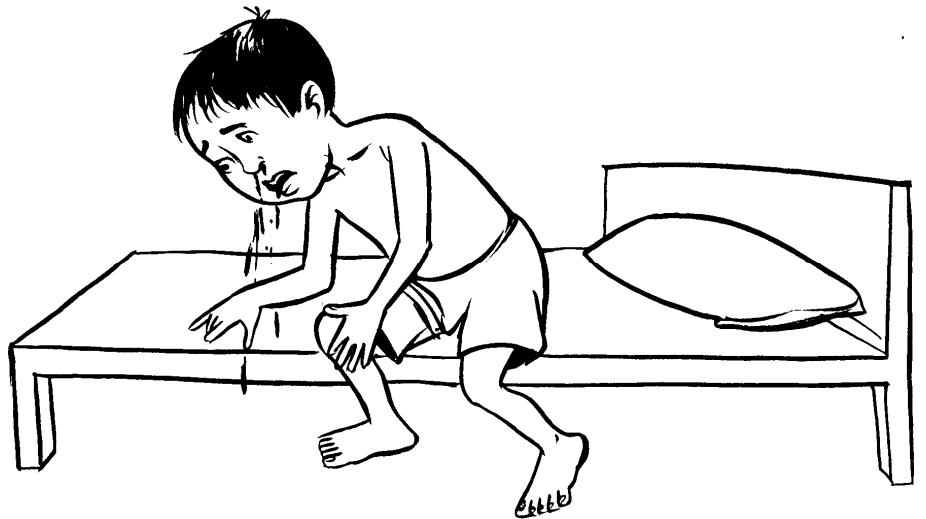
- Jaw^ˇ ngeh ma_v sa^ˇ-eu
- Ghaw^ˇ maw^ˇ phyu^ˇ phya ni gheh-
aw^ˇ yaw tceh_^ tceh_^-eu
- Nui ma cheh^ˇ htah_v htah_v-eu
yaw khaw^ˇ hkaw^ˇ-eu
- Gha_v ba_v-aw^ˇ ju[^] leh^ˇ ni gheh-eu



2. Shi_v do[^]-eu

Shi_v do[^] nga leh^ˇ si_v la^ˇ-eu
a^ˇ gheh^ˇ-a_v:

- Ma^ˇ toe[^] toe[^] ne^ˇ toe[^]-eu
- Na^ˇ meh^ˇ shi_v do[^]-eu
- Ga^ˇ nyi^ˇ yaw na[^] i^ˇ-eu

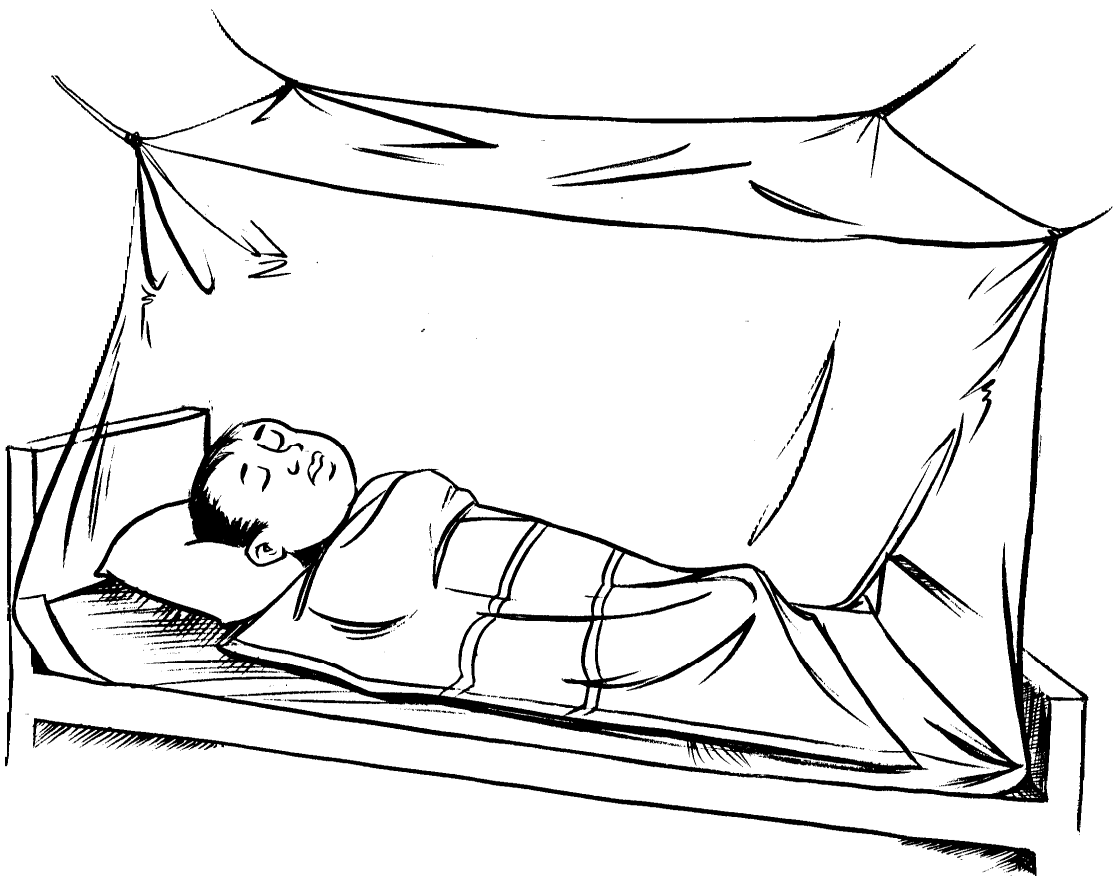


3. Phya_v dui dui-aw^ˇ si^ˇ li_v ba^ˇ yah_v le^ˇ-eu



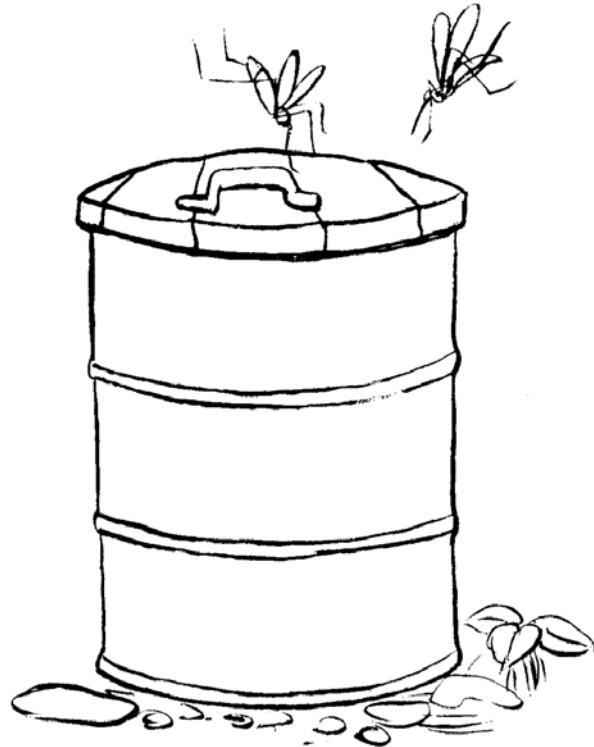
Tho-e^ˇ lon_v to[^] ko-e^ˇ-ah^ˇ a_v jo[^]-eh^ˇ lo_^ qhm_v pha_v nga

Cha^ˇ gaw_v hta_v bi kaw_^. Bui kha kha-aw^ˇ yu_^-aw_v.
Cha^ˇ gaw_v heu je_v-a_v nah ghah^ˇ phaw kaw_^-eu meh.
Hteu mi^ˇ neh nah ghah^ˇ phaw yu_^ ngeh qaw_^, bui kha
la_^ qhoe^ˇ yu_^-aw_v.



Cha^ˇ gaw_ˇ heu je_ˇ-a_ˇ i^ˇ yoe^ˇ ma_ˇ baw ni dah_ˇ
lu_ˆ-eu i^ˇ cu_ˆ la_ˆ qhoe^ˇ u^ˆ kha ah^ˇ-eu meh. Hteu
mi^ˇ neh,

- I^ˇ khah^ˇ la_ˆ qhoe^ˇ ma_ˇ eh^ˇ, la_ˆ nyi^ˇ ma_ˇ eh^ˇ,
i^ˇ cu_ˆ qha^ˇ dah_ˇ-eu oe_ˇ lah_ˇ haw^ˇ-eu chi_ˇ
chu^ˇ daw_ˇ taw^ˆ lu_ˆ-ah^ˇ, qhaw_ˇ phym_ˇ yaw
mui_ˇ-eh^ˇ phym_ˇ hteh_ˇ hta_ˇ-aw_ˇ.
- I^ˇ khah^ˇ la_ˆ qhoe^ˇ ma_ˇ eh^ˇ, la_ˆ nyi^ˇ ma_ˇ eh^ˇ,
daw^ˇ law^ˇ qha^ˇ dah_ˇ ga^ˇ cha^ˇ gaw_ˇ u^ˆ ma_ˇ
kha ah^ˇ nya pha_ˇ-eh^ˇ i^ˇ cu_ˆ cha_ˇ gui-aw_ˇ.
Ma_ˇ ngeu^ˇ na^ˇ, mi^ˇ tsa_ˇ sheh^ˆ dzm-aw_ˇ. To^ˆ-
eh^ˇ ma_ˇ jah^ˇ na^ˇ, cha^ˇ gaw_ˇ u^ˆ kha ah^ˇ-aw^ˇ
oe_ˇ nah byah la^ˇ ngeh, za_ˇ ceu_ˆ-eu meh.



Cha^ˇ gaw_ˇ qha^ˇ jaw^ˇ za_ˆ nya ga^ˇ mya_ˇ de_ˇ-aw_ˇ.

I^ˇ cu_ˆ dah_ˇ le^ˇ nya-eu oe_ˇ lah_ˇ
lah_ˇ phye_ˇ, qhm_ˇ ma_ˇ ma_ˇ
phye_ˇ, ma^ˇ tca_ˆ tca_ˆ phye_ˇ
daw_ˇ taw^ˆ lu_ˆ bi_ˇ dzeh ji^ˇ-
aw_ˇ.



Nym^ˇ hti_ˇ jaw_ˇ deh_ˆ-eu ga^ˇ
dah^ˇ ma_ˇ tsoe_ˇ-eu a^ˇ baw^ˇ
haw^ˇ-eu baw du^ˆ daw_ˇ taw^ˆ
lu_ˆ mya_ˇ de_ˇ htu^ˇ de_ˇ-aw_ˇ.



Nym^ˇ daw_ˇ pheh haw^ˇ-eu
htah_ˇ gho_ˆ htah_ˇ jaw^ˇ ja^ˆ-eu
i^ˇ cu_ˆ dah_ˇ-eu du_ˇ qaw_ˆ daw_ˇ
taw^ˆ lu_ˆ cha_ˇ dzeh ji^ˇ-aw_ˇ.



